



THE WESTIN CAPE TOWN
 Convention Square, 1 Lower Long Street,
 Cape Town, South Africa, 8001
 T +27 (0)21.412.9999
 F +27 (0)21.412.9003
 westincapestown.com

Perfectly Located

The Westin Cape Town is set at the gateway to the V&A Waterfront and located adjacent to the CTICC (Cape Town International Convention Centre) with a direct integrated link.

The hotel is ideally located for business and pleasure and is within easy walking distance from the city's most popular cultural and commercial attractions. The Cape Town International Airport is 20 kilometres away.

REWARD YOURSELF

Meeting planners are automatically enrolled in the Starwood Preferred Guest® program, the most flexible and rewarding frequent guest program in the industry. Whether you plan a meeting, a wedding or any other event, you will earn one Starpoint® for every three U.S. dollars of eligible group revenue.*

Starpoints can be redeemed for free stays or upgrades at any participating Westin, Four Points by Sheraton, Sheraton, W, Le Méridien, St. Regis, Aloft, Element or The Luxury Collection hotel or resort with no blackout dates on Free Night Awards.

*Up to a maximum of 20,000 Starpoints per meeting/event. All promotions associated with the Starwood Preferred Guest program are subject to the terms and conditions of the Starwood Preferred Guest program, which are subject to change and can be found at SPG.com

Rest Assured

Each of our 483 contemporary guest rooms and suites offers the Westin Heavenly Bed® and Heavenly Shower®, floor to ceiling views, High-Speed Internet Access, dual-line and cordless phone with data port. Other amenities include a refreshment center, work desk, in-room safe, and gourmet coffee maker.

The hotel's extensive suite collection is comprised of 15 Junior Suites, 16 Westin Executive Suites and 1 Presidential Suite. Other room types include 281 Deluxe Rooms, 44 Grand Deluxe Rooms and 126 Westin Executive Club Rooms.

The Westin Cape Town also offers guests 100% smoke-free floors.

EAT AND DRINK WELL

The Westin Cape Town offers a variety of restaurants, suitable for any taste. Thirty7 serves brasserie-style fare and ON19 contemporary cuisine. For the perfect end to the day visit Louis B's bar and lounge or Raleigh's Cigar Bar.

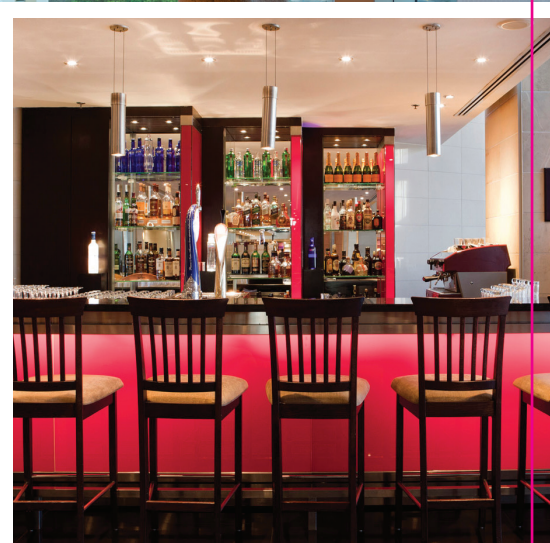
SuperFoods® are on offer in Thirty7 and ON19. Our in-room dining menu brings tasty and wholesome choices to the comfort of your room 24 hours a day.

THE WESTIN
 CAPE TOWN



Meeting Planner Guide

THE WESTIN CAPE TOWN

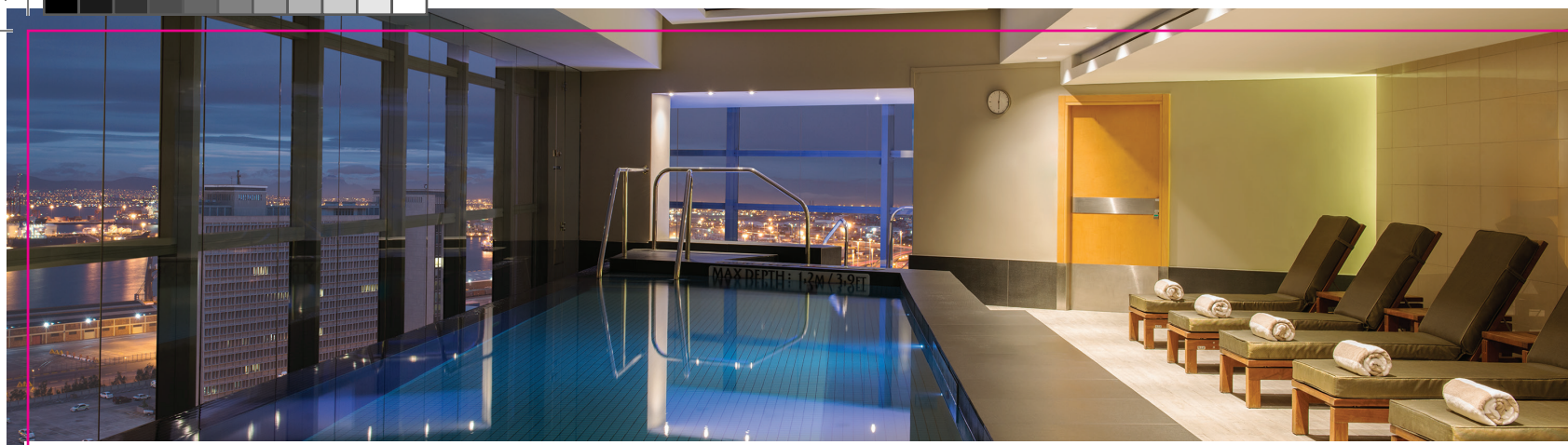


starwood
 Hotels and Resorts



©2012-2013 Starwood Hotels & Resorts Worldwide, Inc. All Rights Reserved. Preferred Guest, SPG, Aloft, Element, Four Points, Le Méridien, Sheraton, St. Regis, The Luxury Collection, W, Westin, Heavenly and their logos are the trademarks of Starwood Hotels & Resorts Worldwide, Inc., or its affiliates.

For a better you.™



Meetings Set For Success

Meetings are an opportunity to connect with colleagues and explore new ideas. When you hold your meetings at Westin, we remove the distractions so your group can focus on the business at hand for an effective and successful session.

The Westin Cape Town leads the market in the city with a total of 20 meeting facilities that can be adapted to every need and requirement. It is the only hotel in the city that has direct connectivity to the Cape Town International Convention Centre.

Westin Clutter-Free Meetings help planners and guests stay organised and productive with an open room design, socially appropriate amenities and delicious SuperFoodsRx menu choices to keep minds sharp and well nourished. Streamlined stations provide paper, pens and beverages to keep everyone's individual work area neat and clear. You can feel good about Westin meetings with thoughtful "Green" features, such as energy-efficient light bulbs, double-sided meeting pads and water pitchers to replace water bottles and reduce waste.

Whether you are hosting 25 friends or 1 000 conference attendees, our seasoned meeting specialist will assist you with every detail. As part of the Starwood family of hotels and resorts, Westin hotels offer a variety of innovative tools to help you book meetings with ease. StarGroups lets you create a free customized website which allows attendees to book reservations as well as access documents via a unique URL. Designed with the meeting planner in mind, our personalized services make it effortless to provide a memorable experience for each and every invitee.

To begin planning your next Westin event, please contact 01445.conventionsales@Starwoodhotels.com

Fitness And Free Time

Visit our award-winning Heavenly Spa with breathtaking views. Rejuvenate with a massage, enjoy an exclusive range of holistic and beauty therapies, or simply relax in the jacuzzi, indoor infinity pool, sauna, steam and outdoor pool.

Energize with our 24-hour WestinWORKOUT® fitness center featuring weight machines, free weights, cardio equipment and spectacular views.

Hotel services include Service Express®, concierge services, gift shop, business centre, wine shop, travel desk, car rental, valet and self-parking.

DELIGHT IN THE DETAILS

From magnificent banquets to the most refined conference, our associates will delight your guests with impeccable service and attention to detail. Conferences and banquets for up to 600 people can be held in our Grand Ballroom. The Old Harbour Lobby also includes 4 breakaway rooms ideal for sub-plenaries, offices, secretarial, speaker's rooms and much more. 6 Breakaway venues on our Mezzanine level add much needed space for meetings or events.

Let your creativity flow in our Harbour Edge executive boardrooms. The rooms range in size from 17 square metres to 52 square metres and can cater for between 6 and 14 people. For ambience, the rooms rely on natural lighting with six of them having full length glass windows.

All meeting facilities include state-of-the-art technology and complimentary High-Speed Wireless Internet Access.

Visit westincape town.com for directions and reservations.

Accommodation Rooms

ROOM CATEGORY	TOTAL SQ. METRE	NO OF ROOMS
DELUXE ROOM (2ND - 12TH FLOOR)		
■ KING		181
■ TWIN		95
■ ACCESSIBLE ROOM		5
WESTIN EXECUTIVE CLUB ROOM (14TH - 18TH FLOOR)		
■ KING		94
■ TWIN		32
GRAND DELUXE ROOM (2ND - 18TH FLOOR)		
■ KING		44
JUNIOR SUITE (2ND - 17TH FLOOR)		
■ KING		15
WESTIN EXECUTIVE SUITE (2ND - 18TH FLOOR)		
■ KING		16
PRESIDENTIAL SUITE (18TH FLOOR) STAR OF AFRICA		
■ KING		1



Meeting & Function Rooms

ROOM NAME	TOTAL SQ. METRE / FEET	DIMENSIONS METRE / FEET	CEILING HEIGHT METRE / FEET	BOARD ROOM	U-SHAPE	SCHOOL ROOM	THEATRE	CABARET (6)	OVAL TABLES ONLY 8 SEAT 10 SEAT	TABLES + BUFFET 8 SEAT 10 SEAT	TABLES + DANCE FLOOR + STAGE		COCKTAIL / RECEPTION			
											8 SEAT 10 SEAT	8 SEAT 10 SEAT				
OLD HARBOUR LOBBY LEVEL																
■ BALLROOM EAST	273 2967	21 X 13 69 X 43	5,0	16	—	63	162	270	144	192	240	120	150	100	120	250
■ BALLROOM WEST	273 2967	21 X 13 69 X 43	5,0	16	—	63	162	270	144	192	240	120	150	100	120	250
■ GRAND BALLROOM	546 5865	21 X 26 69 X 85	5,0	16	—	96	420	600	252	336	420	272	340	256	320	600
■ VASCO DA GAMA	81 900	9 X 9 30 X 30	3,5	11	36	27	48	60	30	40	50	32	40	—	—	80
■ BARTHOLOMEW DIAZ	81 900	9 X 9 30 X 30	3,5	11	36	27	48	60	30	40	50	32	40	—	—	80
■ DA GAMA / DIAZ	162 1770	9 X 18 30 X 59	3,5	11	66	57	96	120	60	80	100	64	80	48	60	120
■ MARCO POLO	54 588	8,4 X 6,4 28 X 21	3,5	11	18	21	27	30	24	32	40	—	—	—	—	40
■ SIR FRANCIS DRAKE	69 756	8,4 X 8,2 28 X 27	3,5	11	15	24	27	40	24	32	40	—	—	—	—	50
MEZZANINE LEVEL																
■ PRINCE EDWARD ISLAND	62 672	8,4 X 7,4 28 X 24	2,53	8	16 / 20	—	27	40	—	—	—	—	—	—	—	—
■ SCHAPPEN ISLAND	40 420	6,2 X 6,4 20 X 21	2,53	8	12 / 14	—	—	—	—	—	—	—	—	—	—	—
■ EDWARD / SCHAPPEN	86 900	6,2 X 13,8 20 X 45	2,53	8	20 / 26	—	51	72	—	—	—	—	—	—	—	—
■ SEAL ISLAND	41 450	7,5 X 5,4 25 X 18	2,53	8	12 / 14	—	—	—	—	—	—	—	—	—	—	—
■ ROBBEN ISLAND	56 625	7,5 X 7,5 25 X 25	2,53	8	16 / 18	—	27	40	—	—	—	—	—	—	—	—
■ SEAL / ROBBEN ISLAND	107 1150	7,6 X 14,1 25 X 46	2,53	8	20 / 26	—	51	72	—	—	—	—	—	—	—	—
■ DASSEN ISLAND	52 560	6,2 X 6,4 20 X 26	2,53	8	12 / 16	—	—	—	—	—	—	—	—	—	—	—
■ MARION ISLAND	31 324	3,8 X 8,2 12 X 27	2,53	8	10 / 12	—	—	—	—	—	—	—	—	—	—	—
THE HARBOUR EDGE																
■ VICTORIA	35 384	4,8 X 7,3 16 X 24	2,50	8	14 / 18	—	16	30	—	—	—	—	—	—	—	—
■ ALFRED	16 176	4,8 X 3,4 16 X 11	2,50	8	8 / 10	—	—	—	—	—	—	—	—	—	—	—
■ VICTORIA / ALFRED	53 576	4,8 X 11 16 X 36	2,50	8	20 / 26	20	24	60	—	—	—	—	—	—	—	—
■ DUNCAN DOCK	58 620	6,2 X 9,3 20 X 31	2,50	8	14 / 18	18	20	40	—	—	—	—	—	—	—	—
■ EAST PIER	28 288	3,8 X 7,3 12 X 24	2,50	8	8 / 10	—	—	—	—	—	—	—	—	—	—	—
■ STURROCK DOCK	18 180	3,8 X 4,7 12 X 15	2,50	8	6 / 8	—	—	—	—	—	—	—	—	—	—	—
■ ROBINSON DOCK	18 180	3,8 X 4,7 12 X 15	2,50	8	6 / 8	—	—	—	—	—	—	—	—	—	—	—
■ WEST PIER	43 463	—	2,50	8	12 / 18	12	—	—	—	—	—	—	—	—	—	—
THE BEDROCK(S)																
■ THE ANCHOR ROOM	95 964	7,6 X 12,5	2,03	—	13 / 17	—	54	80	—	—	—	—	—	—	—	—
FOOD AND BEVERAGE OUTLETS																
■ THIRTY / LOUIS B'S RESTAURANT		350														400
■ ONYX RESTAURANT		—														100
■ HARBOUR DECK OUTDOOR POOL		—														40

Floor Plans

